

NEW MEXICO DIVISION OF VOCATIONAL REHABILITATION

Presenter: Kayla Damron



Supervising Counselor
505-697-0901



CENTER FOR
DEVELOPMENT
& DISABILITY



Presenter: Jennifer Cordasco



Transition Counselor
505-414-8621



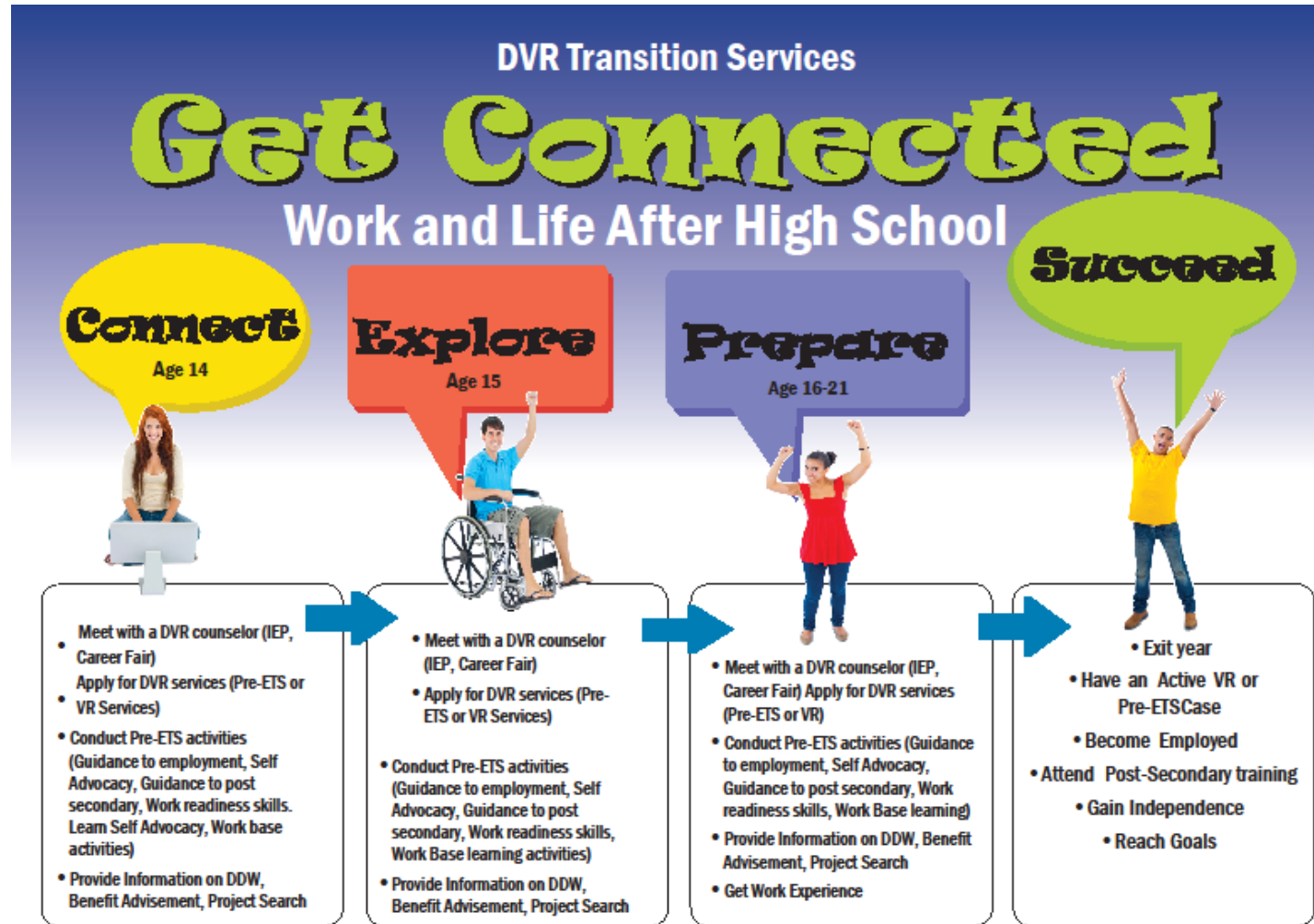
Larry Melendez
Area 4 Program Manager
505-383-7008



Nicole Chapman
Transition Counselor
505-238-6523

Working with DVR through Transition

DVR Transition Services



DVR recommends that students and their families begin to make transition plans at least three years prior to exiting school. However, services by DVR are individualized—based on the needs of each student—and can be completed at any time.

NMDVR

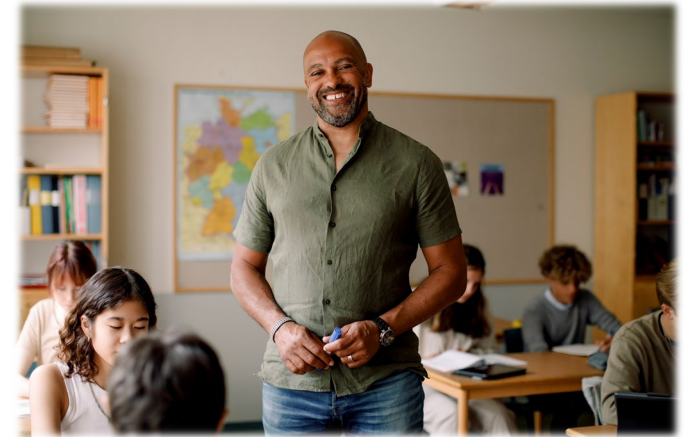
- The New Mexico Department of Education, Division of Vocational Rehabilitation (DVR) works together with students, families, schools and community agencies and organizations to provide services that promote successful transitions from school to work and into adult life.
- Beginning at age 14, students with disabilities can connect with VR for Pre-Employment Transition Services “Pre-ETS”. VR counselor works with students, their families, their schools and community partners to help make informed decisions about their future.
- DVR supports School-to-work transition planning-through assisting students transitioning from high school to college and/or job placement.



Working with DVR through Transition

Who conducts the Pre-ETS activities in schools?

- Supervising Counselor – Adults 50% / Students 50%
- VR Counselor – Adults 85% / Students 15%
- Transition Counselor – Students Only



What do these activities look

- Depends on the needs of the students/school...
- Generally provided in the classroom in a group setting.
- Can be provided to individual students.
 - If provided to an individual student, can be at the school, office or virtually.



What are the differences between Pre-ETS Services vs VR Services?

- Pre-ETS: Ages 14 to 22 years of age, must have an IEP or 504 plan and must be in school
- VR Services: Ages 14 – lifetime, must have a career goal
- PRE-ETS include:
 - Job Exploration
 - Post-Secondary Education Counseling
 - Work Readiness Training
 - Work Experience
 - Self-Advocacy



Vocational Rehabilitation Process

Application



Preliminary Assessment



Eligibility / Disability Priority



Comprehensive Assessment

Individualized Plan for Employment



Services Provided



Job Placement / Support



Services no longer needed /
Re-open if needed

VR SERVICES

- Transition Services for youth
- Adult Education and support
- Counseling and support services
- Workplace Accommodations
- Assessment and IPE Planning
- Job Training and Skill Development
- Assistive Technology
- Job Retention Services



What is a Developmental Disabilities Waiver (DDW)?

- The Developmental Disabilities Waiver (DD Waiver) is part of the Medicaid program and is designed to provide services for individuals with developmental disabilities to live independently in the environment of their choosing.
- An assessment is conducted to determine the individual's needs and the type of services required.
- Assessment helps in creating individualized Service plan tailored to person specific needs and goals
- The waiver covers a range of services aimed at supporting individuals in their communities. Services may include:
 - Residential services: Assistance with living arrangements and housing support.
 - Customized Community Services: Daytime activities and skill building programs.
 - Supported employment: Assistance finding and maintaining appointment.
 - Respite care: Temporary relief for caregivers
 - Behavioral supports: Services to address challenging behaviors.
 - Assistive technology: devices to aid in daily living

What is Benefit Advisement?

- Similar and Parallel to Work Incentive Planning and Assistance
- Financial Aspects of Working
- Answer the question of What Happens to my Benefits When I Return to Work.
- Look at Financial Management While Using Safety Nets.

What does work experience look like?

- Part-Time employment that matches their future career goal
- Internships
- Summer employment
- Volunteer work
- Cooperative Education Programs
- Apprenticeships
- Job Shadowing



In Summary:

- Transition Counselors spend all their time building relationships with schools and students and conduct group and individualized PRE-ETS.
- VR Counselors spend 15% of their time with students and provide individual PRE-ETS and will occasionally provide in-school group PRE-ETS
- DDW is part of the Medicaid program and is designed to provide services and support for individuals with developmental disabilities to live independently in the environment of their choosing.
- PRE-ETS Services start at age 14 to prepare students to transition into adulthood
- VR services include transition services and are typically once students are ready to enter into an Individualized Employment Plan
- Benefits Advisor provides guidance to ensure individuals make informed decisions, considering both short-term financial implications and long-term financial sustainability.
- Work Experience should closely match the student's future career goal.

Are there any
other
questions
that we can
answer?

